



Mount St. Helens National Volcanic Monument



for the greatest good

Know the Rules

- Disturbing or removing natural features is prohibited in all areas.

Restricted Area #1

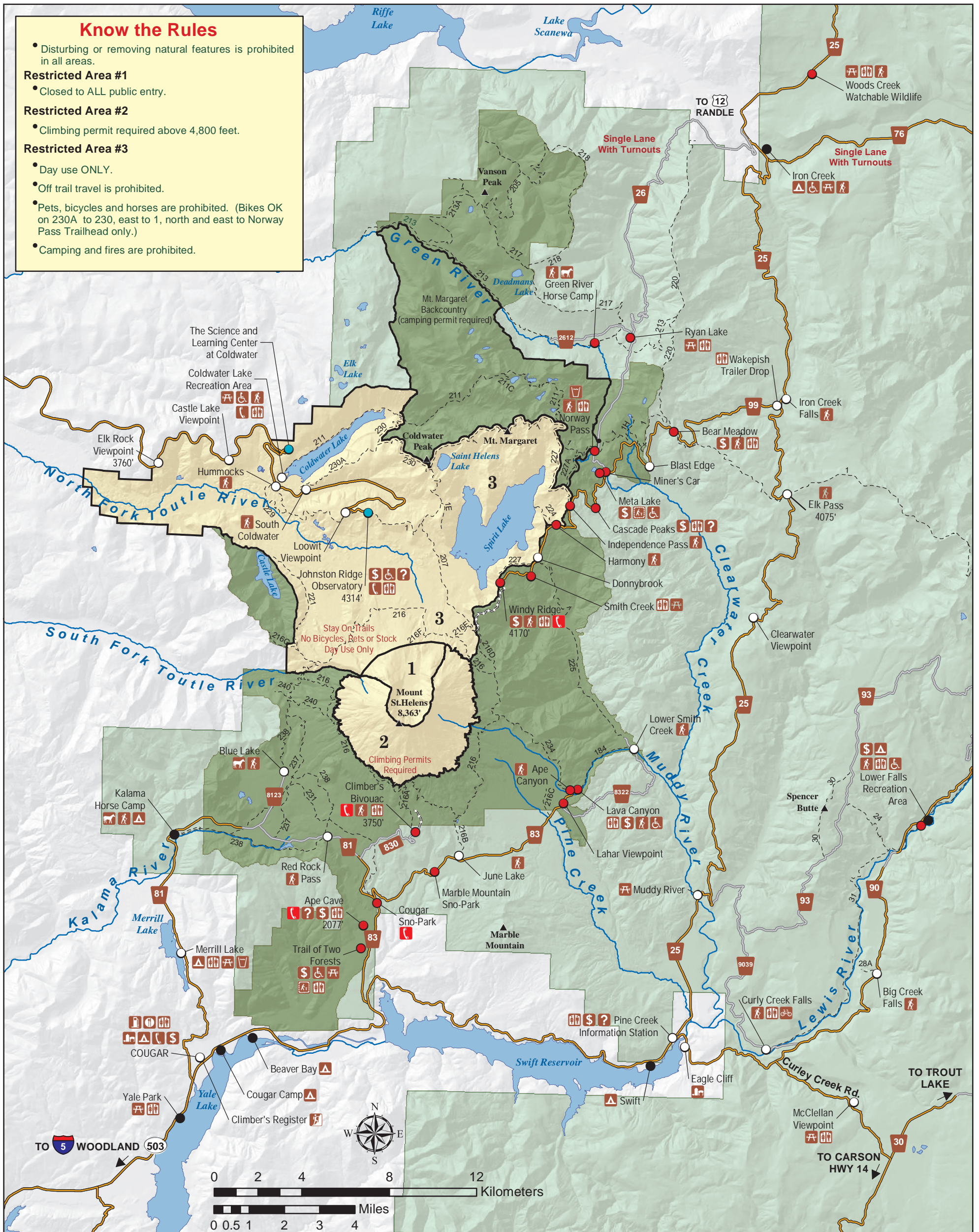
- Closed to ALL public entry.

Restricted Area #2

- Climbing permit required above 4,800 feet.

Restricted Area #3

- Day use ONLY.
- Off trail travel is prohibited.
- Pets, bicycles and horses are prohibited. (Bikes OK on 230A to 230, east to 1, north and east to Norway Pass Trailhead only.)
- Camping and fires are prohibited.



Gifford Pinchot NF

- Admin Boundary
- Mount St. Helens NVM
- Restricted Area
- No Fees Required
- Recreation Day Pass Required
- Monument Pass Required
- Campground with Fee

Transportation

- Paved Roads
- Gravel Roads
- Dirt Roads
- Trails

Hydrography

- Major Rivers
- Major Waterbodies

Recreation

- Information
- Passes Sold
- Barrier Free
- Campground
- Trail Access
- Picnic Area
- Interpretive Trail
- Telephone
- Restrooms
- Water
- Food
- Horse Area
- Fuel
- Gift Shop
- General Store
- Emergency Call Box

This map is intended for general reference and is approximate in general proportions.

Elevations are in feet

For Road and Recreation Conditions Report, go to this link: <http://www.fs.usda.gov/recremain/giffordpinchot/recreation#cond>

Printed June 2012